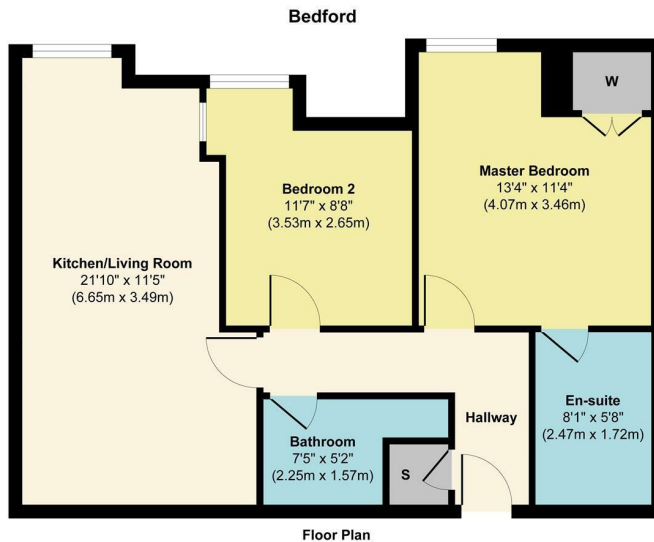


2 Bed Apartment
located in



**Apartment 15, 43 Bedford Street
Leamington Spa
CV32 5DJ**



Approx. Gross Internal Floor Area 639 sq. ft / 59.38 sq. m
Illustration for identification purposes only, measurements are approximate, not to scale.
 Produced by Elements Property

Asking Price £210,000

CONTACT

Office 1H
 Valiant Office Suites
 Lumonics House
 Valley Drive, Rugby
 Warwickshire
 CV21 1TQ

EMAIL

sales@acdc.agency

TELEPHONE

0333 335 5445

<http://www.acdcsalesandlettings.co.uk>

SUMMARY

Nestled in the heart of Royal Leamington Spa, this exquisite top-floor apartment on Bedford Street offers a perfect blend of modern living and stunning views. Spanning an impressive 678 square feet, this meticulously renovated property boasts two spacious bedrooms and two well-appointed bathrooms, making it an ideal choice for professionals, couples, or small families seeking comfort and style.

Reconstructed in 2010, the apartment showcases contemporary design and high-quality finishes throughout. The inviting reception room serves as a perfect space for relaxation or entertaining guests, while the large windows allow natural light to flood the area, enhancing the overall ambiance. The well-designed layout ensures that each room flows seamlessly into the next, creating a harmonious living environment.

Located in the vibrant Royal Leamington Spa, residents will benefit from a wealth of local amenities, including shops, restaurants, and parks, all within easy reach. This apartment is not just a home; it is a lifestyle choice that offers both comfort and convenience in a sought-after location.

Energy Efficiency Rating		Current	Potential
Very energy efficient - lower running costs			
(92 plus) A			
(81-91) B			
(69-80) C			
(55-68) D			
(39-54) E			
(21-38) F			
(1-20) G			
Not energy efficient - higher running costs			
England & Wales		EU Directive 2002/91/EC	