

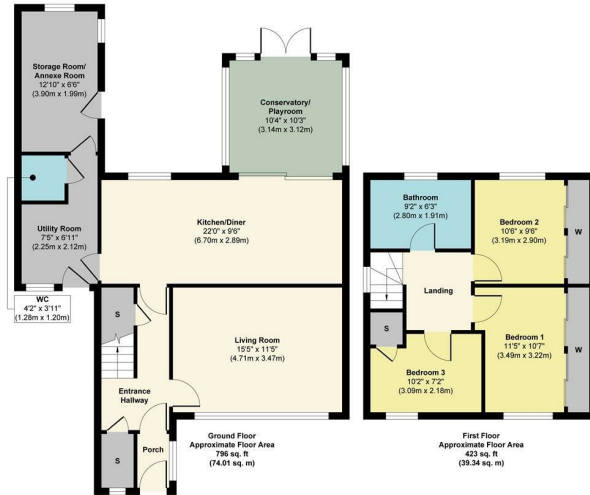
**3 Bed House - Semi-Detached
located in Rugby**



**43 Onley Park
Rugby
Willoughby
CV23 8AN**



43 Onley Park



Approx. Gross Internal Floor Area 1219 sq. ft / 113.35 sq. m
Illustration for identification purposes only, measurements are approximate, not to scale.
Produced by Elements Property

Asking Price £325,000

CONTACT

Office 1H
Valiant Office Suites
Lumonics House
Valley Drive, Rugby
Warwickshire
CV21 1TQ

EMAIL

sales@acdc.agency

TELEPHONE

0333 335 5445

<http://www.acdcsalesandlettings.co.uk>

SUMMARY

ACDC are delighted to bring to market this immaculately presented three bedroom semi-detached family home which is situated on the highly desirable 'Onley Park' estate within the picturesque village of 'Willoughby'.

Energy Efficiency Rating		Current	Potential
Very energy efficient - lower running costs			
(92 plus) A			
(81-91) B			
(69-80) C			
(55-68) D			
(39-54) E			
(21-38) F			
(1-20) G			
Not energy efficient - higher running costs			
England & Wales		EU Directive 2002/91/EC	