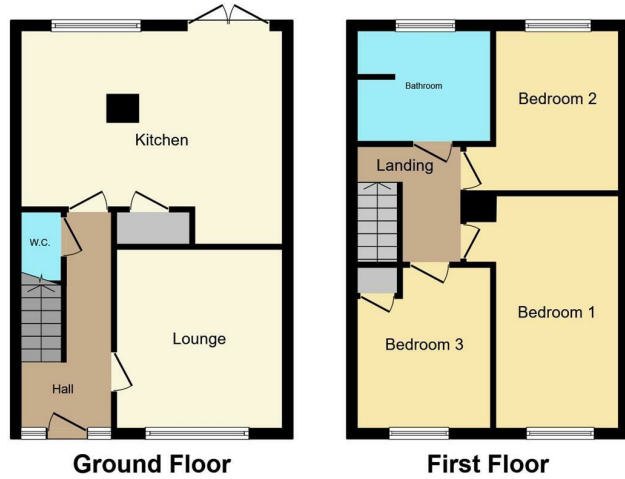




3 Bed House - Semi-Detached
located in



46 Lion Fields Avenue
Coventry
CV5 9GN



Total floor area 82.2 sq.m. (884 sq.ft.) approx

This floor plan is for illustrative purposes only. It is not drawn to scale. Any measurements, floor areas (including any total floor area), openings and orientation are approximate. No details are guaranteed, they cannot be relied upon for any purpose and they do not form part of any agreement. No liability is taken for any error, omission or misstatement. A party must rely upon its own inspection(s). Powered by www.focalagent.com

Offers Around £270,000

CONTACT

Office 1H
Valiant Office Suites
Lumonics House
Valley Drive, Rugby
Warwickshire
CV21 1TQ

EMAIL

sales@acdc.agency

TELEPHONE

0333 335 5445

<http://www.salesandlettings.co.uk>

SUMMARY

An ideal family home... This three bedroom semi detached house is fully equipped and ready to move into. The property is located in the heart of Allesley, Coventry a very sought after area. To the ground floor through the entrance there is a large hallway leading to a cosy lounge area. We have a kitchen/dining area with underfloor heating for those winter nights this is perfect for hosting dinner with friends and family. The French doors open it leads to a large garden with an outside toilet and shed, a cabin with a full accessible bar that is fully equipped with electrics. The first floor comprises of three bedrooms and a three piece bathroom. with a double shower cubicle. This is a lovely property that has been renovated to a lovely finish, with central heating, double glazing and a downstairs toilet. A must see.

